

WIAWIS



2024 PRODUCT GUIDE

WWW.WIAWIS.COM

WIAWIS

WIAWIS stands for "Winning Action, Winning Spirit". It represents the unwavering action and spirit for victory. As a name well suited to the philosophy of WIN&WIN, WIAWIS products are high-end archery bows and they are our representative products of WIN&WIN.





WIAWIS PHILOSOPHY : Quality Differentiation

The story of Win&Win Archery is the story of professional archers who gambled everything to follow their passion.

In 1993 WIN&WIN Co. was established by Mr. Park Kyung Rae and the people who used to be in national archery team. Prior to that, the Korean Archery National Team was seated among the middle world archery ranks in the early 1980s. Mr. Park worked to bring the Korean Archery Team to where it is today; the best archery program in the world. He led Korea to success with their first gold medal at the World Championships in 1985 and with the gold medals at the Olympic in 1988 and at the World Championships in 1991.

Based on its expertise in archery, WIN&WIN has devoted its passion and efforts to make the best bows in the world by actively investing in advanced technology. In 2002, Yamaha archery technology and equipment were introduced to further enhance its technology and know-how. Thus, WIN&WIN has become the top brand in the world as a majority of the athletes from the Olympics and the World Championships are using the WIAWIS Bow from Win-Win. At the Rio Olympic Games in 2016, WIAWIS Bow achieved a gold medal in all categories.

HISTORY OF VICTORY

WIAWIS won the gold medal at the 1999 World Championships. With the best players in the world so far it is loved by the bow that won the medal.

1999

World Archery Championships Men&Women Individual (Lee Eun-Kyung, Hong Sung-Chil)



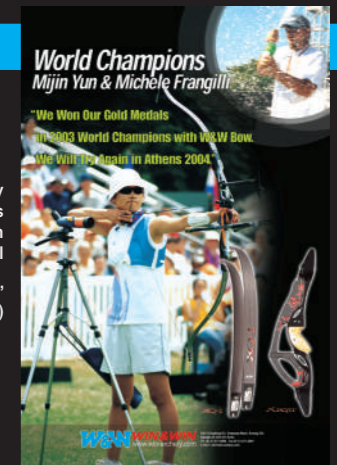
2000

Sydney Olympics Gold Medalist (Team)
New World Recorder (1,379 pts:Nov. 2000) (Oh Kyo-Mun)
Sydney Olympics Gold Medalist (Yun Mi-Jin)



2003

World Archery Championships Men&Women Individual (Michele Frangilli, Yun Mi-Jin)

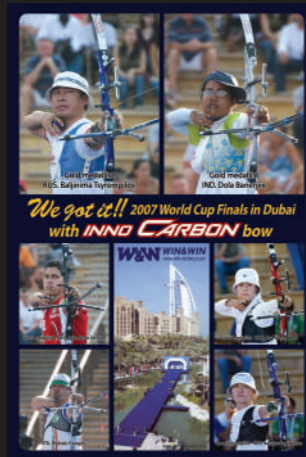


2005



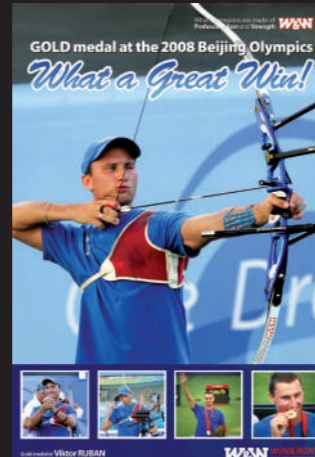
World Archery Championships Men's Individual (Chung Jae-Hun)

2007



Archery World Cup (Baljinima Tsyrepilov, Dola Banerjee)

2008



Beijing Olympics Men's Individual (Viktor Ruban)

2009



World Archery Championships Men's Individual (Lee Chang-hwan)

2010



World Archery Championships Women's Individual (Van Lamoen Denisse Astrid)

2012



London Olympics Women's individual, Team Gold medalist (Ki Bo-Bae)

2013

(Lee Seung-Yoon)

World Archery Championships Women's Individual (Ki Bo-Bae)

2015

2016



Clean sweep of all Archery Gold Medals at the Rio Olympics
Won Men's & Women's individual (Chang Hye-jin, Ku Bon-chan)

2017



World Archery Championships Women's Individual (Ksenia Perova) Women's team (Chang Hye-jin, Choi Mi-sun, Kang Chae-young)

2018



Clean sweep of all Archery Gold Medals at the Archery Worldcup
Woman Gold Silver Bronze / Man Gold Women Team Gold / Men Team Gold / Mix Team Gold

2019



Clean sweep of all Archery Gold Medals at the World Championships
Woman Gold Silver Bronze / Man Silver Bronze / Women Team Gold / Men Team Gold / Mix Team Gold

2021



2020 Tokyo Olympics

Triple Gold medals- Women's Individual, Women's Team, Mixed Team (An San, Korea)
Double Gold medals- Mied Team, Men's Team (Kim Je Deok, Korea)
Women's Team Gold medal (An San, Jang Min-hee, Kang Chae-young, Korea)
Men's Team Silver medal (Wei Chun-heng, Deng Yu-Cheng, Chinese Taipei)
Men's Individual & Team Bronze medal (Furukawa Takaharu, Japan)
Women's Team Bronze medal (Charline Schwarz, Germany)

2021 World Archery Championships

Women's Team Gold medal (An San, Jang Min-hee, Kang Chae-young, Korea)
Women's Individual Gold & Bronze (Kang Chae-young, An san)
Mixed Team (An san)
Men's Team Gold (Kim Je-deok)
Men's Individual Silver (Marcus D'almeida)

2022



Clean sweep of all Archery Gold Medals at the World Championships
Woman Gold Silver Bronze / Man Silver Bronze / Women Team Gold / Men Team Gold / Mix Team Gold

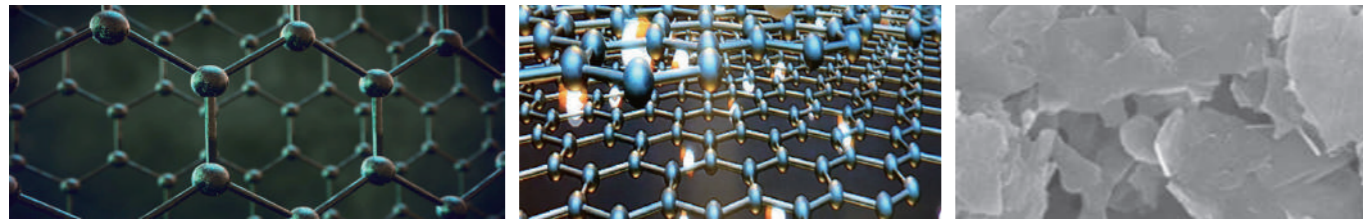
WIAWIS REVOLUTION TECHNOLOGY

UNIQUE MATERIALS

Maximizing properties of carbon with applying a high tech nano graphene

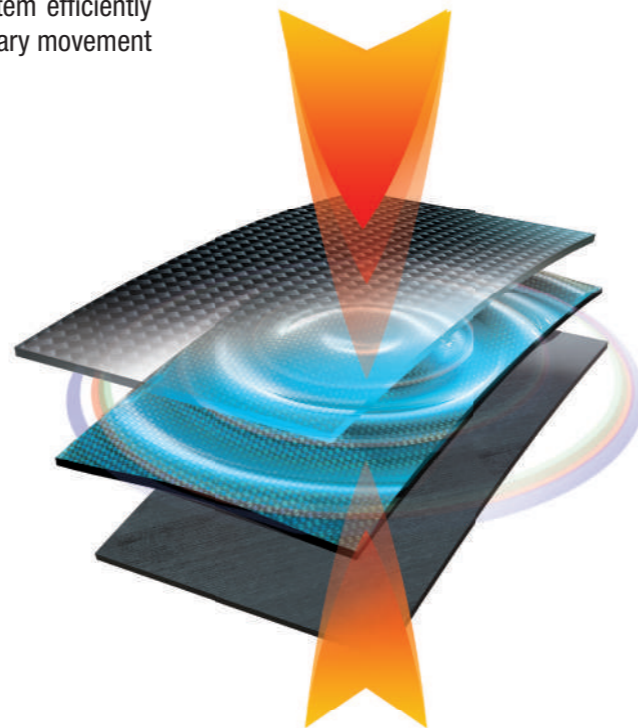


Graphene is the material to have won the Nobel Prize and is referred 'the material of dreams'. It is lighter than wood, stronger than diamond as well as the smallest material that mankind has ever discovered. Based on the development of these graphene-applied carbon prepreg, WIAWIS was able to develop stronger, more accurate and more durable bows by maximizing the performance of the carbon.



APPLICATION OF COUNTER VEIL SYSTEM

A special material laminated in the limb base, Counter veil system efficiently absorbs the shock and vibration in shooting. It reduces unnecessary movement and improves bow accuracy.

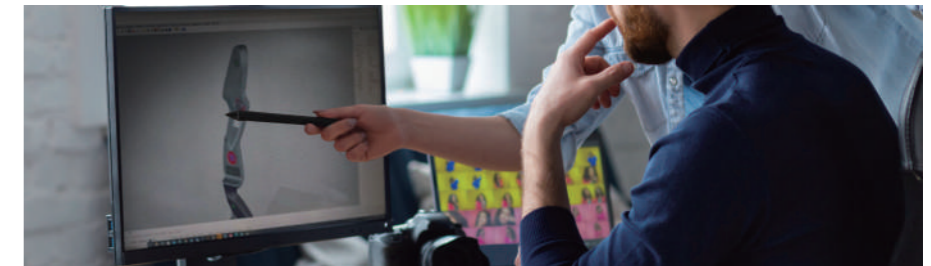


ANALYSIS & DESIGN

WIAWIS bows are planned and designed efficiently by a group of top design experts who have won the Reddot Design Award.



reddot design award



Our expert designers have more than 20 years of knowledge for production/manufacture of WIAWIS bows, as well as experience and know-how as professional archers. WIAWIS bows are created by the best experts from the design to the production of WIAWIS products.





CONTENTS

CARBON RISER

META DX
INNO CXT
CX7

ALUMINUM RISER

ATF-DX
ATF-X
WINEX

LIMBS

NS-XP FOAM
NS-XP WOOD
MXT-XP FOAM
MXT-XP WOOD
NS-G FOAM
NS-G WOOD
CX7 FOAM
CX7 WOOD
WINEX

ACCESSORIES

APPAREL

WIAWIS

WIAWIS risers and limbs represent the pinnacle of nano carbon technology. WIN&WIN's carbon technology is excellent at absorbing shock and minimizing unnecessary movement to make shooting more accurate and stable. Better, faster, stronger!



CARBON RISER

- META DX
- RADICAL PRO
- INNO CXT
- CX7



META DX TECHNOLOGY

META DX features are functionally upgraded with groundbreaking structural design. The special design of the META DX riser adapts materials developed by WIAWIS technology maximizing accuracy and stability at the moment of shooting.

NOBEL PRIZE-WINNING GRAPHENE

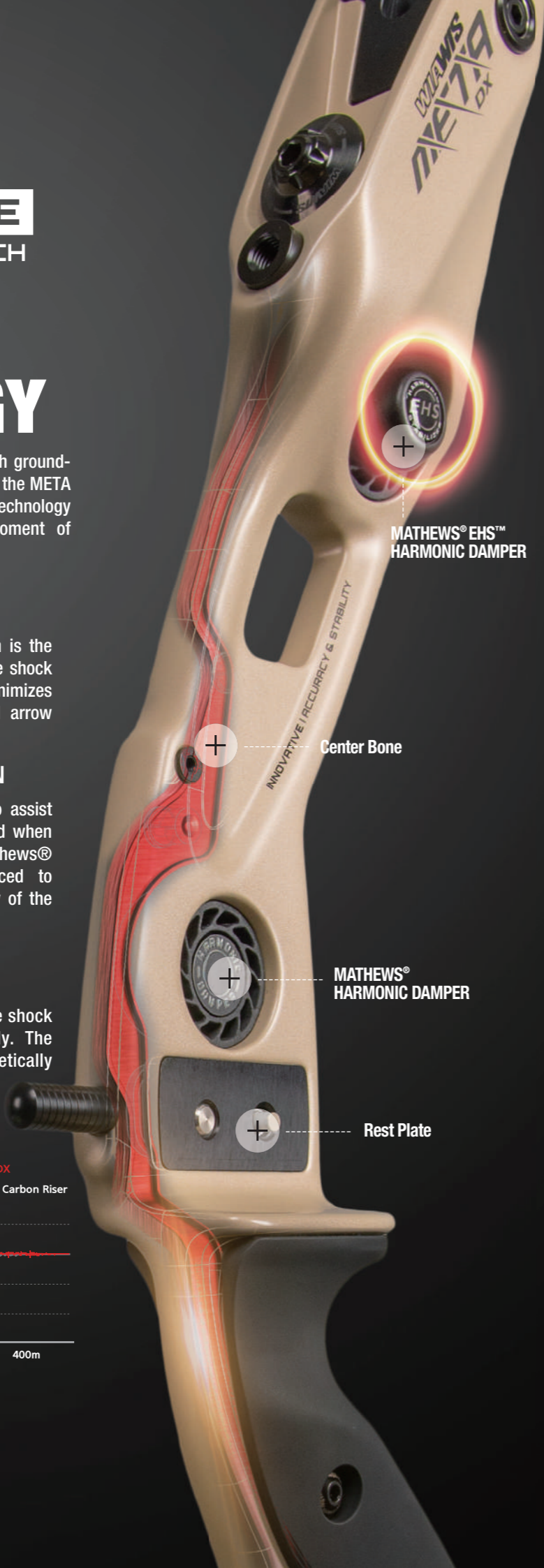
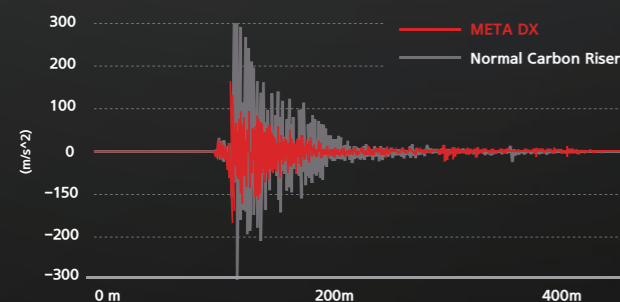
META riser is made of graphene carbon which is the best carbon material of WIAWIS. It improves the shock resistance caused by shooting and therefore minimizes unnecessary movement, resulting in improved arrow grouping.

BETTER TORQUE FREE CONSTRUCTION

In addition, Special Steel has been inserted to assist in the reduction of vibration and torsion caused when force is transferred from the bow limbs. The Mathews® EHS™ dampening system has been introduced to improve stability of the shoot feeling, accuracy of the bow and ultimately arrow grouping.

ADVANCED STRUCTURAL DESIGN

Meta DX riser has been designed to reduce the shock and vibration after shooting more effectively. The structural design is more dynamic and aesthetically pleasing than previous design products.



META DX

LENGTH	25 inches
WEIGHT	1380 g
TYPE	RH / LH
MATERIAL	Graphene / Nano Carbon



Meta Cap

META CAP weighs 9 grams and once you change all 3 original harmonic dampers, you can reduce a riser weight by a total of 47 grams. (Ref. MATHEWS® EHS™ HARMONIC DAMPER weighs 32 grams and MATHEWS® HARMONIC DAMPER weighs 10 grams respectively.)

COLORS



13mm TILLER BOLT



DEFAULT GRIP



All the weight parts need to be removed for the Barebow division (The rubber parts can be inserted into the riser)



RADICAL PRO TECHNOLOGY

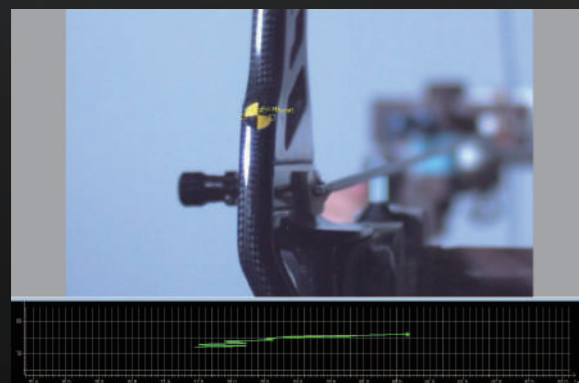
SPECIALLY DESIGNED CENTER SUSPENSION OF RADICAL PRO

The Radical Pro riser has been designed like no other riser specifically to reduce vibration and bow torque when shooting. Unlike a dampener that absorbs vibration after shooting but has no effect on bow torque at the moment of shooting. Ultimately this assists to better arrow grouping by drastically reducing bow torque.

Radical Pro riser shows improved properties on vibration absorption at the same 44lbs limbs set-up.

HERE'S THE RADICAL PRO NANO CARBON RISER

In addition, Special Steel has been inserted to assist in the reduction of vibration and torsion caused when force is transferred from the bow limbs. The Mathews® EHS™ dampening system has been introduced to improve stability of the shoot feeling, accuracy of the bow and ultimately arrow grouping.



RADICAL-PRO

LENGTH	25 inches
WEIGHT	1300 g
TYPE	RH / LH
MATERIAL	Graphene / Nano Carbon

HIGHEST SHOCK ABSORPTION

RADICAL PRO riser is made by nano carbon technology applying the innovative material of graphene. Its Center Suspension improves rigidity and durability while effectively controlling shooting shock and minimizing bow torque. Also, a specially designed Sound Amplification board for the clicker provides clear sound in 3000-6000Hz that is the most audible frequency to the archer and making clicker timing regular. This will enhance better arrow grouping.

COLORS



All the weight parts need to be removed for the Barebow division (The rubber parts can be inserted into the riser)

INNO CXT TECHNOLOGY

Unique functions of the WIN&WIN INNO CXT bow

WIN&WIN launches various lengths of risers (23/25/27 inches) so that the archers can choose the proper bows for themselves.

WIN&WIN launches various lengths of risers (23/25/27") and widens the range of archers' usage according to draw length.

Weight control system

The riser weight is adjustable so the archers can customize the weight to fit their desire.

A more convenient Center-Shot adjustment system

You can conveniently adjust the limb and riser alignment without unstringing the bow. In addition, a highly specialized washer was designed to prevent the limb bolt from randomly coming loose.

Upgraded accuracy

WIN&WIN engineering solved simple problems such as twisting and bending during the molding process. Now it is possible to have virtually perfect limb and riser alignment with WIN&WIN bows.

The ideal grip

WIN&WIN's new grip is made to find the correct pressure point for the archer. It is especially designed to take into consideration the joint position of the each finger, so it creates a very stable grip position and increases arrow grouping.



INNO CXT

UNIQUE DESIGN OPTIMISING CARBON

The CXT riser has been in production for many years and has been a very popular riser winning medals at all levels.

LENGTH	23 inches	25 inches	27 inches
WEIGHT	1120 g (LIGHT:1070 g)	1200 g (LIGHT:1150 g)	1260 g (LIGHT:1210 g)
TYPE	RH	RH / LH	RH
MATERIAL	Nano Carbon		

COLORS



Weight Control System
* 4 flat weights are included
(1 flat weight : 25 g)

CX7

The CX7 riser is designed and manufactured with carbon prepreg where carbon fiber is distributed evenly in all directions. The rigid design emphasizes the features of the stable carbon material riser to minimize shooting errors.

LENGTH	25 inches
WEIGHT	1300 g
TYPE	RH / LH
MATERIAL	Carbon Composite

COLORS



13mm

TILLER BOLT



DEFAULT GRIP

WIAWIS





PETERS
CANADA

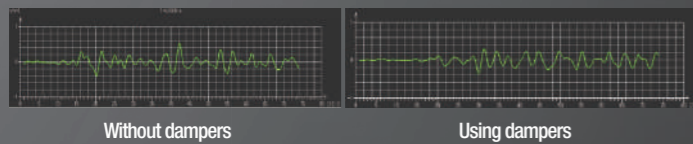
ALUMINIUM RISER

ATF-DX
ATF-X
WINEX

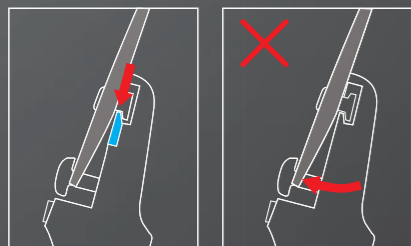
ATF-DX TECHNOLOGY

APPLIED EHS DAMPING SYSTEM

ATF-DX was designed by combining technology and experience of WIAWIS and completed with precision. The EHS damping system was introduced to reduce shock and vibration at the moment of release. With the EHS damper, the shock and vibration of shooting is greatly reduced, making it possible for an archer to obtain more stability of their shot.

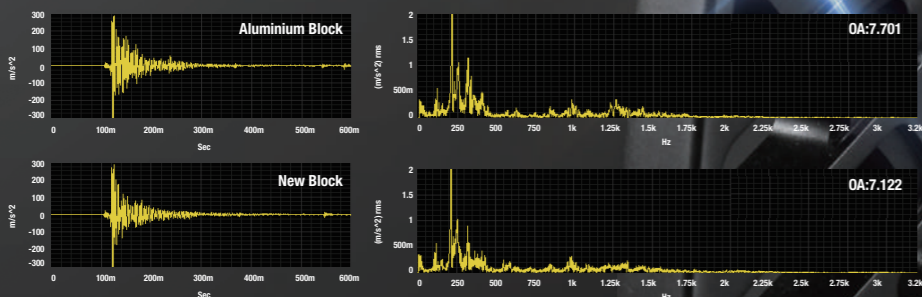


SPECIALIZED PLASTIC ADDED AS A COMPONENT FOR THE ALUMINUM HYBRID BLOCK



After release, the impact from the string is directed vertically from the limb's contact point of the riser block. Super engineered plastic with excellent mechanical properties of the block adds resistance to heat, shock, along with wear and tear.

Minimizes shock and vibration occurring at the moment of release by about 8%, Noise prevention by the friction of metal.



ATF-DX

ATF-DX introduces the same dampers used in the META-DX handle to increase effective reduction in vibration caused by the impact at the moment of shooting. It minimizes unnecessary movement of the bow to assist with improvement of arrow grouping. The ergonomically designed grip provides a positive sensory feeling, increasing stability. Rest plates are adjustable as 4 levels to suit your arrows and your tuning.

LENGTH	25 inches , 27 inches
WEIGHT	1360 g / 1430 g
TYPE	RH / LH
MATERIAL	Aluminum / CNC machining

COLORS

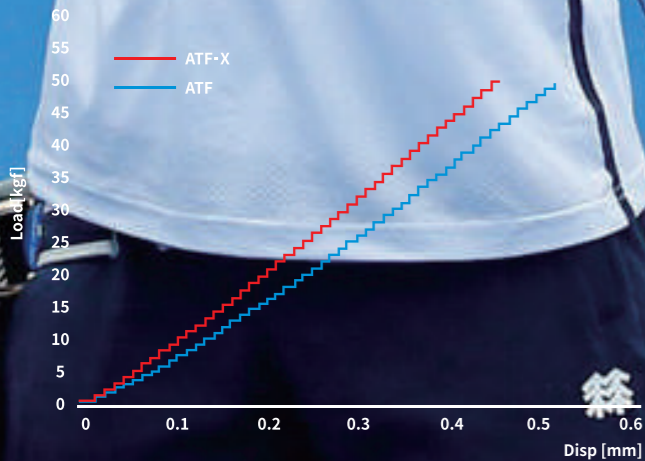


13mm
TILLER BOLT
DEFAULT GRIP

WIAWIS



ATF-X TECHNOLOGY



ATF-X FEATURES

To enhance the features of the aluminum riser while maintaining the same net weight as the ATF riser, it efficiently improved stiffness and anti-twisting so that it is more stable shooting with less vibration and reduced bow torque.

When shooting with ATF and ATF-X risers on the same 44lb limbs, ATF-X riser is less vibration than ATF riser.



ATF-X

ATF-X is a reinforced model of the ATF riser which was used by top world class athletes. Through the balance of the riser design, ATF-X makes the shooting feel more powerful. Anti-torsional 45-degree cross design.

LENGTH	25 inches , 27 inches
WEIGHT	1280 g / 1350 g
TYPE	RH / LH
MATERIAL	Aluminum / CNC machining

COLORS





WINEX

THE IDEAL BOW FOR SERIOUS SHOOTING

WINEX riser is a long-running riser which is designed to be faithful to the most basic role of the riser. Several new designs have been introduced and have been loved by many archers.

LENGTH	23 inches	25 inches
WEIGHT	1080 g	1140 g
TYPE	RH	RH / LH
MATERIAL	Aluminum	

COLORS



13mm
TILLER BOLT

DEFAULT GRIP



INNOVATIVE WIAWIS

WIAWIS's technology through differentiated materials, design and manufacturing skills with serious quality control is leading the world in bow innovation.



LIMBS

- NS-XP FOAM
- NS-XP WOOD
- MXT-XP FOAM
- MXT-XP WOOD
- NS-G FOAM
- NS-G WOOD
- CX7 FOAM
- CX7 WOOD
- WINEX

MOST HEAT RESISTANCE, STABILITY & ACCURACY

NS-XP



You can feel your own movement which is a series of drawing, aiming, and shooting. It is recommended for archers to want powerful shooting or fast shooting, to have short draw length or use lighter pounds of bow, to want accurate and clear shooting as the shooting shock and vibration reduce quickly.

SEF - STABILITY FORGIVING

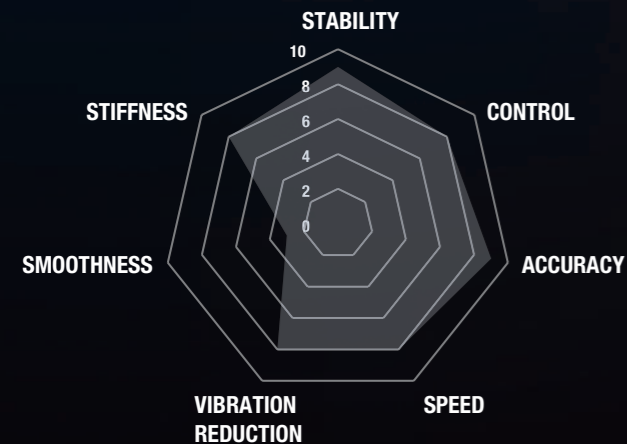
SEF materials, first introduced to archery, enhance shock absorption and reduce vibration, improving bow stability and forgiveness. It fundamentally reduces the impact and vibration transferred to the bow, improving the stability of the bow and increasing forgiveness.

IMPROVED HEAT RESISTANCE

IRR (InfraRed Reflection) pigment coating : Special paint that blocks infrared rays

ACCURACY

An optimal pattern combined various high-performance carbon materials was applied : Torsional stiffness was increased, resulting in increased accuracy and tighter groups.



BETTER ACCURACY & STABILITY

MXT-XP



You can smoothly connect a series of movement. It is recommended for archers who want to control a bow easier with smooth shooting, from drawing to anchoring, who have long draw length or have difficulty to tune the bow with heavy pounds of bow.

USE SPECIAL PAINT TO BLOCK INFRARED RAYS

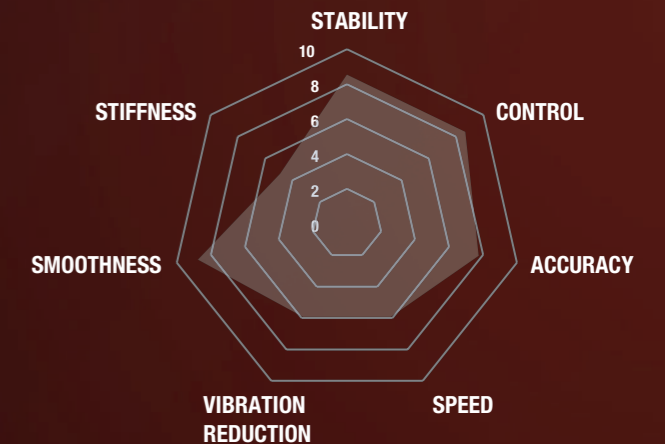
Special paint reflecting infrared rays on the surface of the limbs was used to block the heat rays from sunlight and reduce the temperature effect on the limbs.

LIMB CURVE TO GIVE STABILITY AND SMOOTHNESS

WIAWIS MXT-XP limbs were developed based on accumulated data that has analyzed the correlation between stability and speed according to the strain distribution of the limbs.

FOAM CORE TO IMPROVE HEAT RESISTANCE

Heat resistance is improved by about 10°C compared to the previous one to maintain poundage even when the limbs are subjected to increase heat.

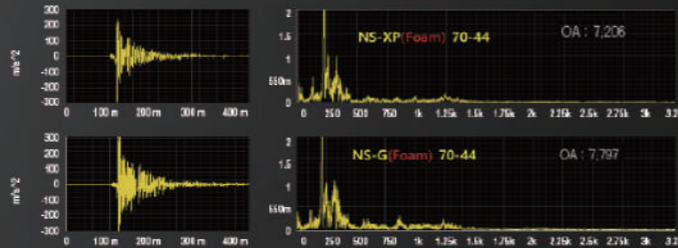


NS-XP TECHNOLOGY

SEF(Soft Epoxy Film) applying

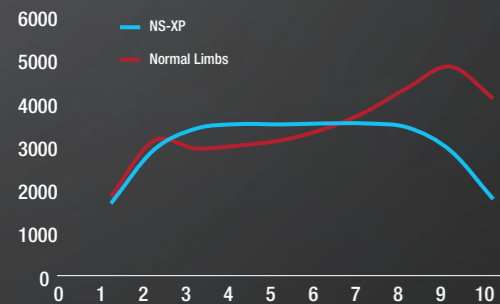
SEF special materials were applied to archery for the first time in the world to dramatically increase shock absorption and enhance vibration reduction performance. It fundamentally reduces the impact and vibration transferred to the bow, improving the stability of the bow and increasing forgiveness.

NS-XP is applied with WIAWIS strain distribution, which improves both strength and stability, by analyzing the correlation between limb bending distribution and speed that WIN&WIN has proven through research.



Strain Distribution for accuracy and stability

NS-XP is applied with WIAWIS strain distribution, which improves both strength and stability, by analyzing the correlation between limb bending distribution and speed that WIN&WIN has proven through research.



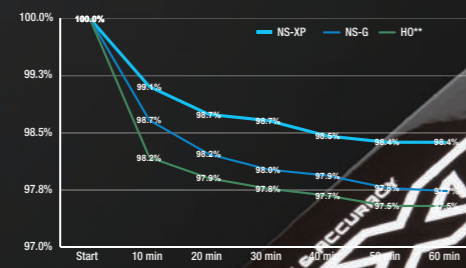
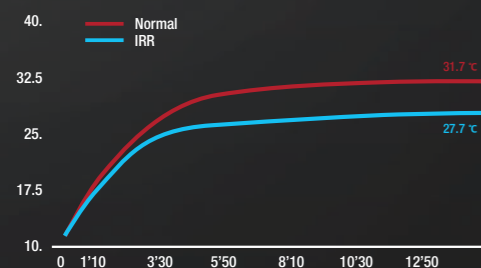
Optimized carbon pattern design

Stability and accuracy after shooting were improved by a combination of various high-performance carbons with different characteristics with optimized pattern. Special carbon pattern design for NS-XP improves stability of torsional stiffness, durability, changes in pound and speed, bow movement.



IRR: Infrared Reflection coating

A special coating with infrared protection on the surface of the limbs reduces temperature rise by blocking more heat.



NS-XP FOAM



LENGTH	Short, Medium, Long
WEIGHT	28 to 48 lbs (2 lbs increment)
MATERIAL	Graphene Foam Core / Advanced High Modulus Carbon

NS-XP WOOD



LENGTH	Short, Medium, Long
WEIGHT	28 to 48 lbs (2 lbs increment)
MATERIAL	Wood Core / Advanced High Modulus Carbon

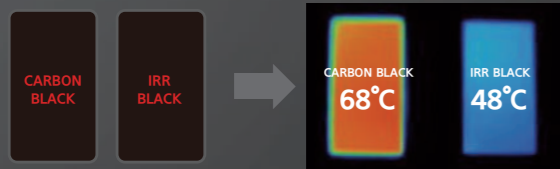


WIAWIS

MXT-XP TECHNOLOGY

USE SPECIAL PAINT TO BLOCK INFRARED RAYS

Special paint reflecting infrared rays on the surface of the limbs was used to block the heat rays from sunlight and reduce the temperature effect on the limbs.



* USE SPECIAL PAINT TO BLOCK INFRARED RAYS : IRR
Reduce the high temperature effect

POUND CHANGING IN FULL-DRAWING

The MXT-XP limbs maximizes archers' shooting skills and improves arrow grouping by maintaining more consistent power over time at full draw.



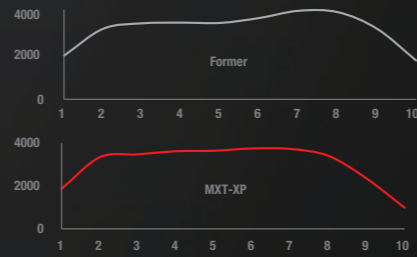
LIMB CURVE TO GIVE STABILITY AND SMOOTHNESS

WIAWIS MXT-XP were developed based on accumulated data that has analyzed the correlation between stability and speed according to the strain distribution of the limbs.

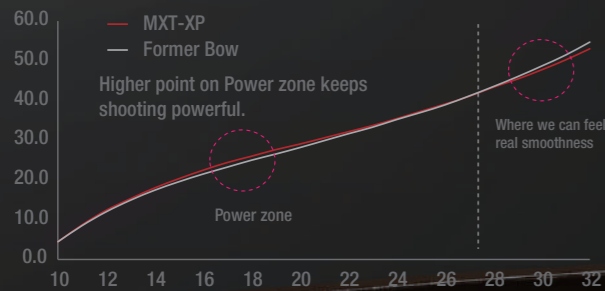
They feature 1) the optimized curve to increase the speed and stability with minimizing the stress of the limbs. 2) They were designed to give smoothness in drawing. 3) better concentration and better arrow grouping by improved limbs anti-torsion after shooting. While maximizing accuracy and stability, which are main characteristics of WIAWIS bows. Even for the archer tries to shoot first, MXT-XP were designed to be easy to control and comfortable in short period.



More strain distribution on MXT-XP



F-X CURVE



MXT-XP FOAM

LENGTH	Short, Medium, Long
WEIGHT	28 to 48 lbs (2 lbs increment)
MATERIAL	Graphene Foam Core / High Modulus Carbon

MXT-XP WOOD

LENGTH	Short, Medium, Long
WEIGHT	28 to 48 lbs (2 lbs increment)
MATERIAL	Wood Core / High Modulus Carbon

MXT-XP limbs have the most stable design since launching the MXT limb series, which gives the feeling of stable shooting with anti-twisting and smooth drawing. Also, special paint is used to enhance heat resistance on the surface of the limbs to enable consistency performance during changing weather conditions.



WIAWIS

NS-G TECHNOLOGY

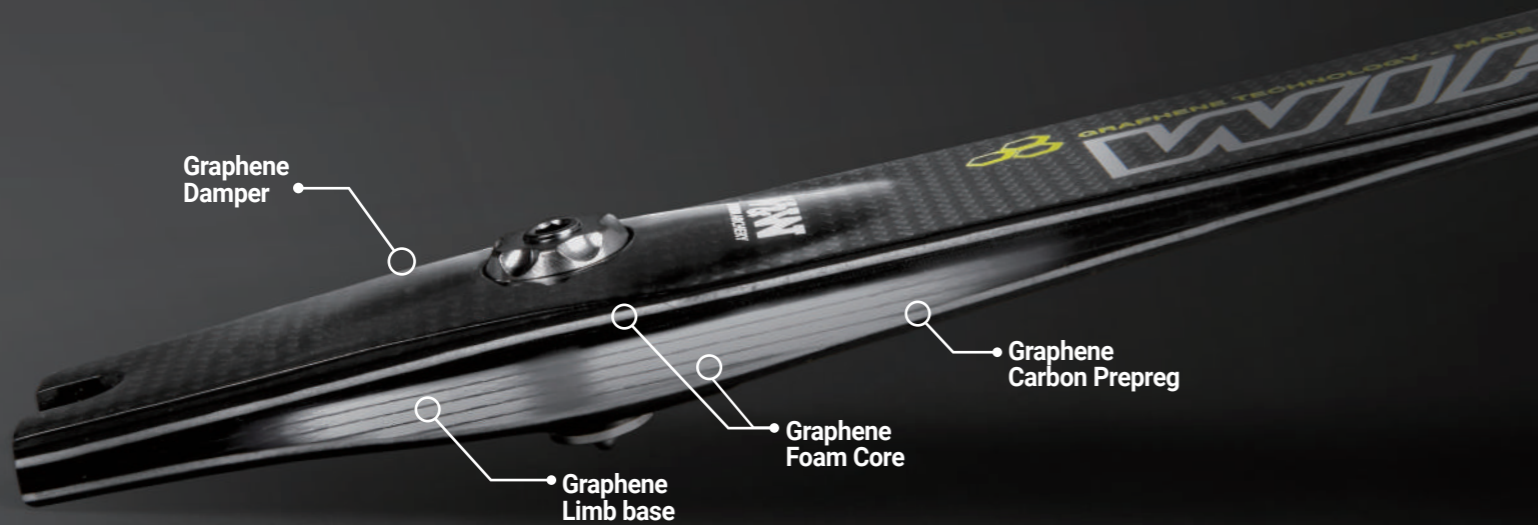
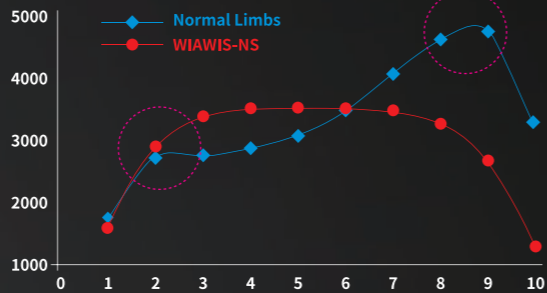
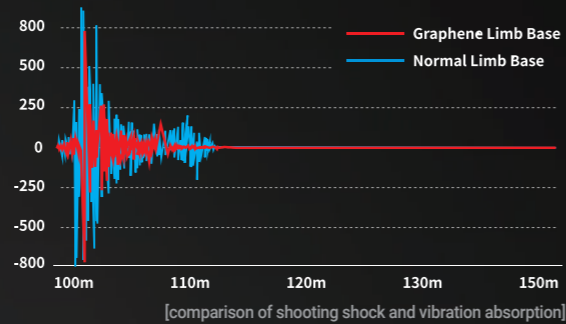
GRAPHENE LIMB BASE

The WIAWIS NS-G limb uses a limb base made of graphene prepreg-dispersed in a high molecular epoxy which has been shown to absorb shock and vibration more efficiently, and help stabilize limb movement after shooting. This new concept of limb construction was solely developed and used by WIN&WIN.

STRAIN-BALANCE TECHNOLOGY

WIN&WIN has enhanced the WIAWIS NS-G limbs in both power and stability by applying Strain-Balance technology. The result of years of research, Strain-Balance technology helps WIN&WIN find the optimal limb flex profile through analyzing the relationship between stability and speed according to the limb flex. The NS-G limbs feature enhanced smoothness while drawing without compromising the arrow speed and accuracy which WIN&WIN is known for.

WIAWIS NS-G limbs employ graphene technology to offer shorter and narrower string movement than any other limbs and provide the most efficient energy transfer. This performance creates better arrow grouping with forgiveness.



NS-G FOAM

LENGTH	Short, Medium, Long
WEIGHT	28 to 48 lbs (2 lbs increment)
MATERIAL	Graphene Foam Core & Graphene Limb base / High Modulus Carbon

NS-G WOOD

LENGTH	Short, Medium, Long
WEIGHT	28 to 48 lbs (2 lbs increment)
MATERIAL	Wood Core & Graphene Limb base / High Modulus Carbon

The NS-G is very first limb in the world that uses innovative graphene materials for archery equipment. It also adds a function that minimizes the impact that occurs when shooting in the bottom core part of the limbs. It minimizes bow torque that directly affects the arrow light. Softer, but more advanced competition limbs that used graphene on foam cores to ensure that the arrows don't lose speed and light stability.



CX7 FOAM

LENGTH	Short, Medium, Long
WEIGHT	28 to 48 lbs (2 lbs increment)
MATERIAL	Nano Foam Core / High Modulus Carbon
FINISH	Matt

CX7 WOOD

LENGTH	Short, Medium, Long
WEIGHT	28 to 48 lbs (2 lbs increment)
MATERIAL	Wood Core & Graphene Limb base / High Modulus Carbon
FINISH	Matt

Made of INNO EX POWER's equivalent materials, CX7 is a limb that enables you to feel WIN&WIN's technology more easily with cost effectiveness. CX7 limb is an introductory limb that lets you feel the difference about high-end archery equipment.



WINEX

The WINEX limb has been continuously developed with the WIN&WIN's limb manufacturing process that is improved and refined over time based on WIN&WIN's traditional limb making technology.

LENGTH	Short, Medium, Long
WEIGHT	28 to 48 lbs (2 lbs increment)
MATERIAL	Royal Cross Carbon



WIAAWIS

WIAWIS BOW SPECIFICATIONS

RISER TECHNICAL SPECIFICATIONS

RISER	LENGTH	MASS WEIGHT	TYPE	MATERIAL
META DX	25 inch	1380 g	RH/LH	Graphene / Nano Carbon
RADICAL PRO	25 inch	1300 g	RH/LH	Graphene / Nano Carbon
INNO CXT	23 inch	1120 g	RH	Nano Carbon
	25 inch	1200 g	RH/LH	
	27 inch	1260 g	RH	
CX7	25 inch	1250 g	RH/LH	Carbon Composite
	25 inch	1360 g	RH/LH	
ATF-DX	25 inch	1430 g	RH/LH	Aluminum / CNC Machining
	27 inch	1430 g	RH/LH	
ATF-X	25 inch	1280 g	RH/LH	Aluminum / CNC Machining
	27 inch	1350 g	RH/LH	
WINEX	23 inch	1190 g	RH	Aluminum / CNC Machining
	25 inch	1250 g	RH/LH	

LIMBS TECHNICAL SPECIFICATIONS

LIMBS	LENGTH	TYPE	MATERIAL
NS-XP FOAM CORE	Short, Medium, Long	28~48 lbs	Graphene Foam Core / High Modulus Carbon
NS-XP WOOD CORE	Short, Medium, Long	28~48 lbs	Wood Core / High Modulus Carbon
MXT-XP FOAM CORE	Short, Medium, Long	28~48 lbs	Graphene Foam Core & Graphene Limb base / High Modulus Carbon
MXT-XP WOOD CORE	Short, Medium, Long	28~48 lbs	Wood Core & Graphene Limb base / High Modulus Carbon
NS-G FOAM CORE	Short, Medium, Long	28~48 lbs	Graphene Foam Core / High Modulus Carbon
NS-G WOOD CORE	Short, Medium, Long	28~48 lbs	Wood Core / High Modulus Carbon
CX7 FOAM CORE	Short, Medium, Long	28~48 lbs	Nano Foam Core / High Modulus Carbon
CX7 WOOD CORE	Short, Medium, Long	28~48 lbs	Wood Core / High Modulus Carbon
WINEX	Short, Medium, Long	28~48 lbs	FoamCore / Royal Cross Carbon

GRIP COMPATIBILITY

	1	4	5	6	7	DX5	DX7	CTK II	CTK III	CTK-H	8		
	Standard Plastic	Standard Wood	Standard Plastic	Standard Plastic	High Plastic	High Wood	Standard Plastic	Standard Plastic	Standard Plastic	CTK II Wood	CTK III Wood	CTK-H Wood	Standard Plastic
META DX	○	○	○	○	○	●				○	○	○	
RADICAL PRO	○	○	○	○	○	●				○	○	○	
TFT-G	○	○	○	○	○	●				○	○	○	
INNO CXT, CXT LIGHT	○	○	○	○	○	●				○	○	○	
CX7	○	○	○	○	○	●				○	○	○	
ATF-DX							○	○					●
ATF-X	○	○	○	○	○	●				○	○	○	
WINEX	○	○	○	○	○	●				○	○	○	

※ ● = standard grip to be set in the factory / ○ = compatible

※ Wooden grip in same group from 1 to 6 is marked 'high' on the basis of standard grip at the factory.





ACCESSORIES

- | | |
|------------------|--------------|
| SIGHT | CLICKER |
| STABILIZER | FINGER TAB |
| UPPER STABILIZER | CHEST GUARD |
| DAMPER | ARM GUARD |
| WEIGHT / CAPS | QUIVER |
| BOLT / T-BLOCK | BOW STAND |
| V-BAR | BOW CASE |
| CUSHION PLUNGER | STRETCH BAND |
| ARROW REST | |

WS 700

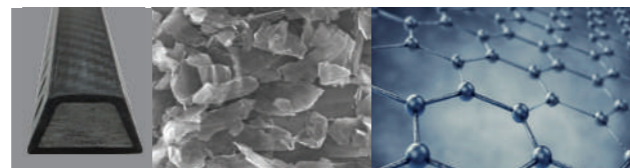


GRAPHENE FOAM CORE

WS700 is WIN&WIN's brand new precision-machined competition sight, the evolution of the WS600 series. It has wheel tuners to accurately measure fine sight movements and a slide bar for convenient and smooth vertical adjustment. A unique bolt system securely locks the sight in place.

Graphene exclusive technology inside its carbon extension bar protects the WS700 from damaging vibration that travels through a bow when it is shot. It also keeps weight to a minimum and prevents torque during shooting.

Graphene is an atomic-scale honeycomb lattice made of carbon atoms. Graphene thickness of 0.2 nanometers is over 200 times stronger than the strongest steel and has improved shock absorption qualities over CNT(Carbon Nano Tube). That's why we call it 'the fruit of Nano technology'. Graphene foam is solid open-cell foam made of single-layer sheets of graphene. The material properties and structure provide excellent tensile strength and approximately double the impact strength over present foam materials. The use of this material in Archery products has been solely developed by WIN&WIN.

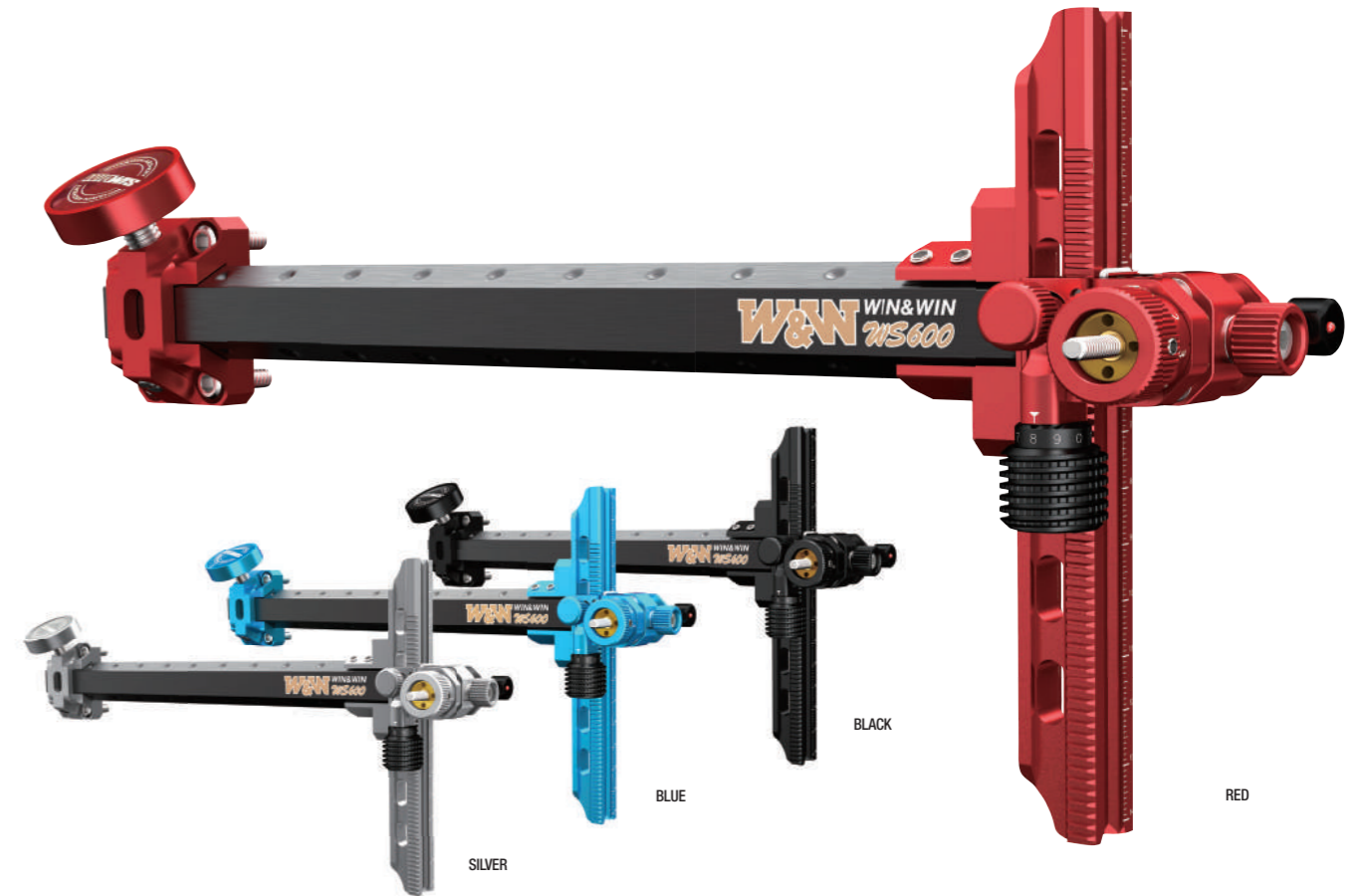


TYPE	RH / LH
WEIGHT	207 g



WIAWIS

WS 600



NEVER COMPROMISE YOUR AIM

WS600 is WIN&WIN's precision-machined competition sight, trusted by some of the world's best archers. It has wheel tuners to accurately measure fine sight movements and a slide bar for convenient and smooth vertical adjustment.

A unique bolt system securely locks the sight in place. Foam inside its carbon extension bar protects the WS600 from damaging vibration that travels through a bow when it is shot. It also keeps weight to a minimum and prevents torque during shooting.

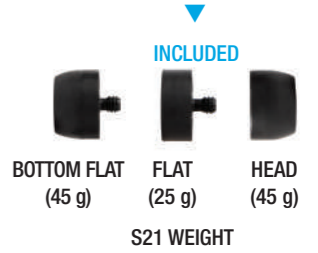
TYPE	RH / LH
WEIGHT	221 g



WIAWIS

ACS-EL

The design of the ACS-EL stabilizer maximizes the performance by effectively minimizing bow torque, shock absorption and vibration characteristics

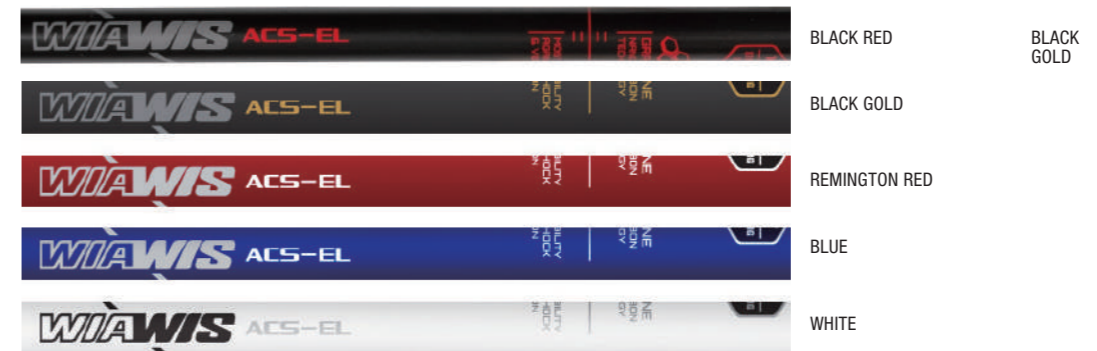


1 HEAD (45 g)
1 BOTTOM FLAT(45 g)
INCLUDED

ACS-EL EXTENDER 2INCHES



LONG ROD LENGTH	26 inches (165 g)	28 inches (168 g)
	30 inches (171 g)	32 inches (176 g)
SHORT ROD LENGTH	10 inches (74 g)	11 inches (77 g)
	12 inches (80 g)	14 inches (84 g)
	15 inches (86 g)	
EXTENDER LENGTH	2 inches (58 g)	4 inches (60 g)
	3 inches (55 g)	6 inches (70 g)
	5 inches (65 g)	

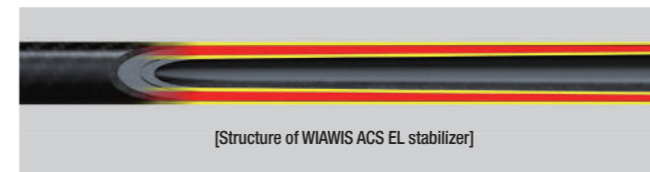
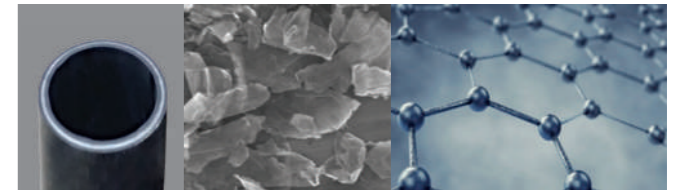


WIAWIS STABILIZER

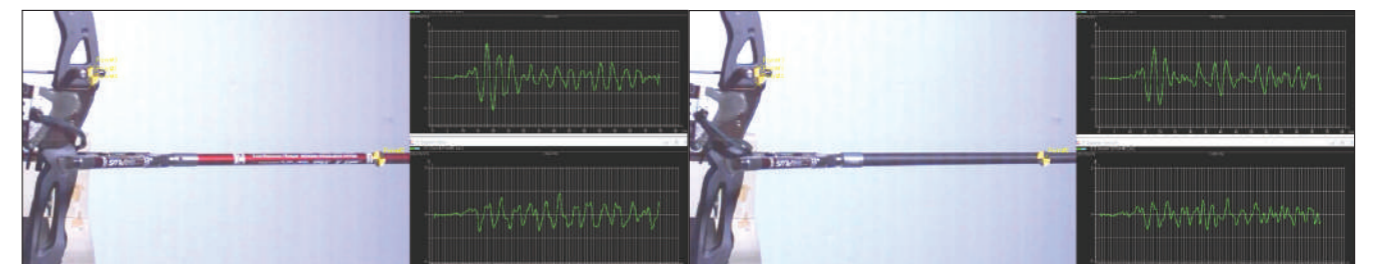
Stabilizers require to be strong and rigid to suppress bow torque during shooting. They have been designed and manufactured to effectively reduce the impact and vibration generated during shooting.

The ACS-EL stabilizer uses high-tech materials such as graphene carbon to improve stiffness and stability.

The design is also maximized performance through WIAWIS's unique carbon pattern and tapered structure.



- high Modulus carbon application
- effective stiffness and tapered structure for better shock and vibration absorption
- optimized mass weight

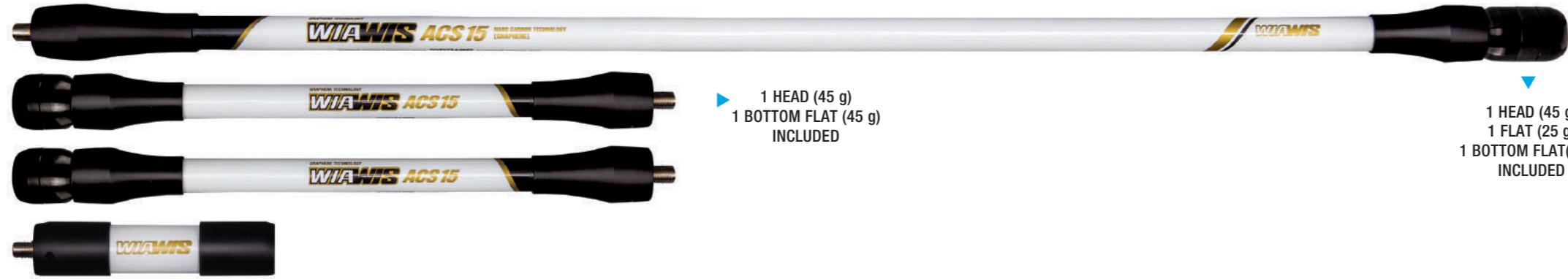


When using the WIAWIS ACS EL stabilizers on a bow, the riser movement becomes better balanced and more stable.



ACS 15

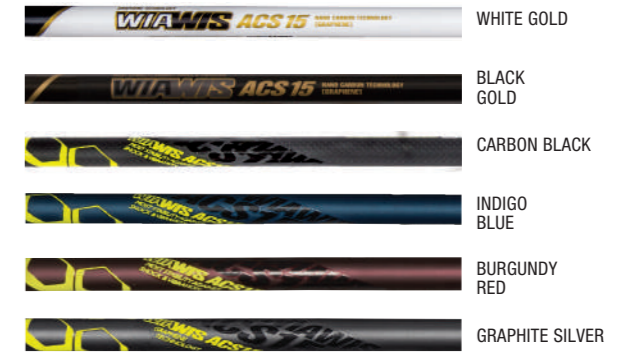
The ACS 15 is a 15 Ø diameter, thin but weighty stabilizer with excellent shock resistance, vibration reduction, and stability, which effectively reduces the vibration and impact of shooting and improves the feeling of the shot. It has been designed not only for recurve shooters, but also for the compound market.



▶ 1 HEAD (45 g)
1 BOTTOM FLAT (45 g)
INCLUDED

▼ 1 HEAD (45 g)
1 FLAT (25 g)
1 BOTTOM FLAT(45 g)
INCLUDED

LONG ROD LENGTH	26 inches (200 g)	28 inches (210 g)
	30 inches (220 g)	32 inches (230 g)
SHORT ROD LENGTH	10 inches (109 g)	11 inches (112 g)
	12 inches (115 g)	14 inches (124 g)
	15 inches (125 g)	
EXTENDER LENGTH	3 inches (65 g)	4 inches (80 g)
	5 inches (90 g)	6 inches (100 g)



S21

S21 stabilizer uses the graphene carbon and tapered structures (21.0mm-17.5mm) to reduce the vibration caused by shooting more reliably. In addition, the stiffness is improved compared to HMC PLUS stabilizer, allowing compound archers to use it.



▶ 1 HEAD (45 g)
1 BOTTOM FLAT (45 g)
INCLUDED

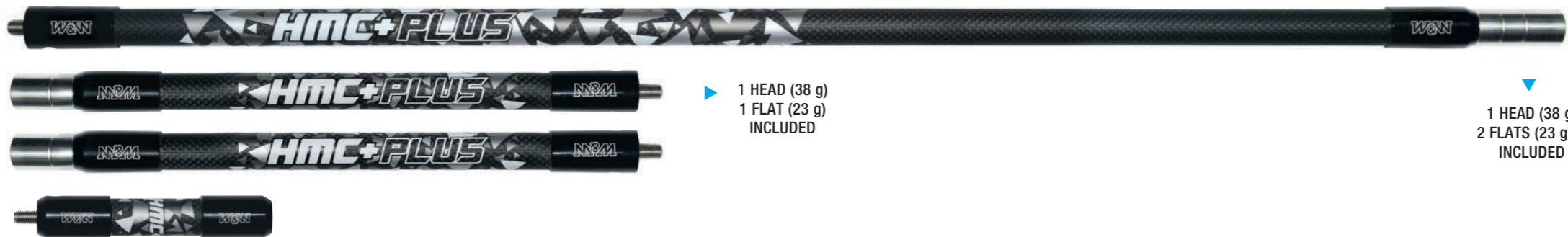
▼ 1 HEAD (45 g)
1 FLAT (25 g)
1 BOTTOM FLAT(45 g)
INCLUDED

LONG ROD LENGTH	26 inches (140 g)	28 inches (150 g)
	30 inches (155 g)	32 inches (160 g)
SHORT ROD LENGTH	10 inches (85 g)	11 inches (90 g)
	12 inches (95 g)	14 inches (100 g)
	15 inches (105 g)	
EXTENDER LENGTH	3 inches (60 g)	4 inches (75 g)
	5 inches (85 g)	6 inches (90 g)



HMC PLUS

HMC PLUS stabilizer is a best-selling product over a long period of time at WIN AND WIN Co., Ltd. It is made of High Modulus carbon and the outside diameter is 18.5 mm straight (internal tapered) stabilizer, which can be used in all weather conditions regardless of the performance of men and women.



▶ 1 HEAD (38 g)
1 FLAT (23 g)
INCLUDED

▼ 1 HEAD (38 g)
2 FLATS (23 g*2)
INCLUDED

LONG ROD LENGTH	26 inches (111 g)	28 inches (116 g)
	30 inches (122 g)	
SHORT ROD LENGTH	10 inches (80 g)	11 inches (84 g)
	12 inches (89 g)	
EXTENDER LENGTH	3 inches (50 g)	4 inches (65 g)
	5 inches (75 g)	6 inches (80 g)



UPPER STABILIZER



ACS-ST CARBON UPPER STABILIZER

The ACS-ST CARBON UPPER STABILIZER has an increased carbon content of the carbon tube to reduce the impact of shooting more effectively. A stainless steel cap provides increased weight and strength to increase shooting feeling.

LENGTH	120 mm	WEIGHT	185 g
THREAD SIZE	5/16"-24		

COLORS



ACS-EL CARBON UPPER STABILIZER

The ACS-EL Carbon Upper Stabilizer's all-carbon core suppresses vibration and bow torque quickly at release along with a help of Multi Damper attached.

LENGTH	125 mm	WEIGHT	125 g
THREAD SIZE	5/16"-24		

COLORS



ACS CARBON UPPER STABILIZER

Carbon bar, multi damper and aluminum body-well-balanced in three parts help efficient vibration and bow torque control.

LENGTH	125 mm	WEIGHT	125 g
THREAD SIZE	5/16"-24		

COLORS



DAMPER



WIAWIS MULTI DAMPER

WIAWIS MULTI damper is designed to reduce vibration quickly caused by shocks during shooting and to reduce secondary vibrations after shooting from special material and strength of the damper.

It is also designed to be used with various types of bows such as up, long and short stabilizer and weight control dampers under the grip by using the screws of 1/4-20 and 5/16-24. The damper is available not only for recurve bow but also for compound bow.

LENGTH	38 mm	WEIGHT	48 g
COLORS	BLACK		



ACS DAMPER

After much research and development by the Win&Win team on the shape and length of vibration waves with stabilizers, Win&Win has released their WIAWIS ACS Damper. The ACS Damper is far superior in absorbing vibration.

LENGTH	50 mm	WEIGHT	33 g
THREAD SIZE	1/4"-20	COLORS	BLACK



BW DAMPER

BW SHORT DAMPER

BW&BW SHORT DAMPER

BW dampers are made from an absorbent rubber material that nearly eliminates vibration during shooting and controls poor movement in equipment after the shot.

LENGTH	BWD : 40 mm	BWD SHORT : 25 mm	
WEIGHT	BWD : 45.5 g	BWD SHORT : 32.5 g	
THREAD SIZE	1/4"-20	COLORS	BLACK



MATHEWS® HARMONIC DAMPER

MATHEWS® EHS™ HARMONIC DAMPER

MATHEWS® HARMONIC DAMPER

WEIGHT	10 g	COLORS	BLACK
--------	------	--------	-------

MATHEWS® EHS™ HARMONIC DAMPER

WEIGHT	32 g	COLORS	BLACK
--------	------	--------	-------

WEIGHT

DISC COLOR WEIGHT

WIAWIS DISC COLOR weight products are made in three weights and four colors. It was designed to allow archers to set their own weight and color freely.

In order to apply both 1 / 4-20 and 5 / 16-24 threaded parts to the bows, Three types of screws are included below

WEIGHT - 20 g / 40 g / 60 g

*included screws

- 40mm screw 5/16-24
- 23mm screw 5/16-24 1/4-20
- 20mm screw 5/16-24



WEIGHT



COLORS



COLOR WEIGHTS

WEIGHT - Head 40 g / Flat 23 g



COLORS



WIN WEIGHT(HMC PLUS)

WEIGHT - Head 38 g / Flat 23 g



S21 WEIGHT

WEIGHT - Head 45 g / Flat 25 g / Bottom 45 g



CAPS



META CAP

META CAP is a product designed to make the META DX and ATF-DX risers lighter when the user wants it. You can remove either the assembled MATHEWS® EHST™ HARMONIC DAMPERS or MATHEWS® HARMONIC DAMPER on its own, or both if required. You can then replace them by inserting the META CAPS into the empty holes.

SIZE	32 ø (mm)	COLORS	BLACK
WEIGHT	9 g	MATERIAL	SILICONE

BOLTS

TILLER ADJUSTMENT BOLT

All tiller bolts are 13mm diameter and are compatible with any type of WIAWIS risers.

COLOR ALUMINUM TILLER BOLT



COLOR STAINLESS STEEL TILLER BOLT



ATF-DX ALUMINUM TILLER BOLT



META-DX STAINLESS STEEL TILLER BOLT



TFT-G ALUMINUM TILLER BOLT



CXT STAINLESS TILLER BOLT



LIMB BOLT

WEIGHT - 2g

(*original stainless steel limb bolt weighs 6grams)

COLORS

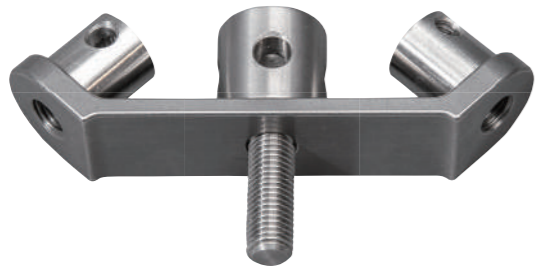


DX T-BLOCK

TYPE - CARBON HANDLE TYPE / ALUMINUM HANDLE TYPE



V-BAR



WIAWIS SUS V-BAR

This is a new concept of V-Bar made from strong stainless steel with enhanced design. It has a reduced mass compared to a standard V-Bar and is designed to quickly transfer the shooting shock/vibration through into the stabilization. It helps to make the shooting feel more stable.

WEIGHT	115 g	COLORS	Satin
--------	-------	--------	-------

TWO STRAIGHT ANGLES - 40, 45 degrees



WIAWIS CX-AD V-BAR

The adjustable carbon V-Bar allows the elevation angle of the short stabilizers by movement up and down. It is made from carbon fiber which makes it lighter than any other adjustable V-Bar. The vibration absorption properties are excellent which will enhance the archers concentration and feeling during shooting. It offers the adjustability to fix the short rods in any configuration possible to suit individual archer personal feeling requirements.

WEIGHT	198 g	COLORS	Carbon Matt or Carbon Glossy
--------	-------	--------	------------------------------

WIAWIS S21 V-BAR

Though most shock that occurs when shooting is absorbed by a stabilizer and V-Bar, some vibration returns to the riser and makes consistent accuracy difficult. WIAWIS S21 V-Bar is designed to absorb shock more efficiently, and increase shooting consistency by minimizing the vibration. Create your perfect stabilization system!

WEIGHT	120 g	COLORS	Carbon Matt or Carbon Glossy
--------	-------	--------	------------------------------

FOUR STRAIGHT ANGLES - 35, 40, 45 & 42 degrees



WIAWIS CX2 V-BAR

WIAWIS CX2 V-Bar is designed to absorb shock, and increase shooting consistency by minimizing the vibration that returns back into the riser.

WEIGHT	86 g	COLORS	Carbon Matt
--------	------	--------	-------------

THREE STRAIGHT ANGLES - 35, 40, 45 degrees



CUSHION PLUNGER / REST



MIGHTY CUSHION PLUNGER

MIGHTY cushion plunger is designed to enhance the concentration in a optimized size, and the aluminum material offers luxurious finish and gentle button action.

MATERIAL	Stainless steel	WEIGHT	43 g
THREAD SIZE	5/16"-24	COLORS	Black, Silver Gold, Rainbow, Blue
ADJUSTABLE LENGTH	min 24.0 mm – max 29.0 mm (29 mm pressure point) min 17.5 mm – max 24.0 mm (24 mm pressure point)		



SP ARROW REST

TYPE	RH / LH	COLORS	Black, Silver Gold, Rainbow, Blue
------	---------	--------	--------------------------------------



WMR200 ARROW REST

WIN&WIN's recurve arrow rest uses a flipper-style arm to improve accuracy and ensure smooth shooting. It incorporates a bearing that tightens groups on the target while providing superb clearance. The arm is stiff and stable, minimizing the vertical movement that interferes with clean arrow flight.

TYPE	RH / LH	COLORS	Black, Silver
------	---------	--------	---------------

CLICKER



ARC CLICKER

In existing ACS clickers, we reinforced the blade to have an arch shape allowing an arrow to be placed in the clicker without using a finger.

SIZES	6-32, 4-40 or M4	MATERIAL	Carbon
STRENGTH	SOFT / HARD		

COLORS



ACS CLICKER

The sleekly-shaped plate with a metal cap gives you a crystal-clear 'click' sound, with easier and more precise adjustment than before.

SIZES	6-32, 4-40 or M4	MATERIAL	Carbon
STRENGTH	SOFT / HARD		

COLORS



COLOR CLICKER

As precisely machined stainless steel clicker, it provides accurate and stable timing when aiming. In addition, the tightening part of the clicker is ergonomically designed by allowing easy adjustment of the upper and lower and the front and the rear positions of the clicker by simple locking and loosening.

SIZES	6-32, 4-40 or M4	MATERIAL	Stainless steel
BLADE COLORS	Black, Rainbow, Gold, Silver		
CAP&WHEEL COLORS	Black or White		

FINGER TAB

EZ FINGER TAB

The EZ finger tab is designed with an adjustable plate to perfectly fit your palm and allow for comfortable and natural hooking. The plate can be precisely adjusted to fit your hand by moving the plate in three planes :

up and down, front and back, and diagonally. The small size of the tab takes away obstructions. The tab is made from reliable, high-quality genuine Cordovan leather.

TYPE	RH/LH	SIZE	XSmall, Small, Medium, Large
------	-------	------	------------------------------

CORDOVAN LEATHER SOLD SEPARATELY



EZ R FINGER TAB

The round design of the EZ R Tab and unique sliding adjustments allow for comfortable thumb positioning and natural hooking. The unique plate positioning brings dynamic control over the WIAWIS EZ R finger tab. It is possible to control factors such as hand shape, the force being transmitted through the hand, and sensation of the shot. The plate that supports the little finger can be micro-adjusted and is also detachable. The tab is made from reliable, high-quality genuine Cordovan leather.

TYPE	RH/LH	SIZE	XSmall, Small, Medium, Large
------	-------	------	------------------------------

CORDOVAN LEATHER SOLD SEPARATELY



360 CORDOVAN FINGER TAB

360 Cordovan finger tab has long been loved by many archers for many year. The 360 finger tab is designed using cordovan leather, exchangeable with archers' comfort in mind.

TYPE	RH/LH	SIZE	Small, Medium, Large
------	-------	------	----------------------

CORDOVAN LEATHER SOLD SEPARATELY



ACCESSORIES

FINNO CHEST GUARD

Ergonomically designed to sit securely and consistently on the shoulder and around the chest shot after shot, FINNO Chest Guard was designed by archers for archers!

TYPE	RH / LH	SIZE	Small, Medium, Large
------	---------	------	----------------------

COLORS



AT-100 ARM GUARD

AT-100 Arm Guard has a skeleton-like structure with all the unnecessary parts cut out, making it extremely light and comfortable to wear. Its smooth outer surface creates less friction when impacted by the string.

COLORS



A-3 QUIVER

The total weight is dropped significantly and a cushioned belt provides a comfortable fit. Magnets at the bottom of the quiver make arrow carrying easy and multiple pockets allow you to carry all kinds of accessories.

TYPE	RH / LH
BELT SIZE	Adjustable from 23 to 49 inches

*THREE ARROW TUBES



CARBON BOW STAND

Unlike existing carbon bow stands, the string rest of the WIAWIS CARBON BOW STAND is designed to minimize any damage to the string, enhancing the durability of the stand. The string rest can be freely adjusted up and down to facilitate individual bow requirements. The head of the stand is designed to provide a sense of unity with the grip of the riser, and is made from a silicon material for more stable positioning.

Base fixing pins are provided in two different lengths to allow tailoring to the shooting field conditions. This give versatility to allow a solid/stable bow stand to protect your equipment.



TY MULTI BOW STAND

Suitable for indoor and outdoor use, the TY Multi Bow Stand is solidly built and a reliable bow support in all conditions. It is light yet strong and durable, its flip-lock legs fold up for easy storage and comes with two types of cradle head.

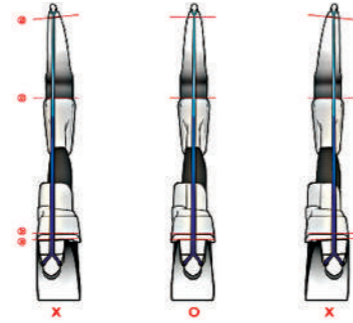
Stable in any conditions with more firmly designed rest.





Check the center-shot at set-up and full draw of the bow

TW-BRACE



The best way to check the alignment of the limbs along with your handle is when the bow is put at full draw. We have created the best tool to achieve it! The WIAWIS TW-BRACE allows a safe setup of your bow.

CAUTION :
Do not draw over 29" (marked red dot) or the TW-BRACE could collapse.



WIAWIS BOW CASE

SIZE	850x370x230 (mm)
COLORS	Black, Sand Beige



ABS BOW CASE

Protecting archery equipment is essential, and that is why the ABS Bowcase has such a solid outer shell. The smart design includes an extendable trolley handle, but does not sacrifice space for its impressive durability. Inside, there is plenty of room to store and organize a variety of archery gear.

SIZE	INNER - 830x330x205 (mm) OUTER - 878x348x219 (mm)
COLORS	Black, Silver



WIAWIS SPANNER WRENCH

This tool is designed to help effectively tighten or loosen the WIAWIS stabilizers. 5mm and 4mm Allen wrenches are included in this spanner, replacing your existing tools. Simply carry this one tool for all your stabilizer needs. WIAWIS SPANNER Wrench can also be used for non-WIN&WIN products as long as there is a hole in the end-cap of the stabilizer.



ARROW PULLER

The solid gripping surface on WIAWIS arrow puller makes retrieving arrows from the target safe and easy. It fits comfortably in the hand, includes a keyring for attachment to a belt or pack. Shaped like a cat!



SCAPOWER STRETCH BAND

Used as an exercise tool, the SCAPOWER Stretch Band will increase an archer's pulling weight, build up muscle and develop firmness in the shoulder.

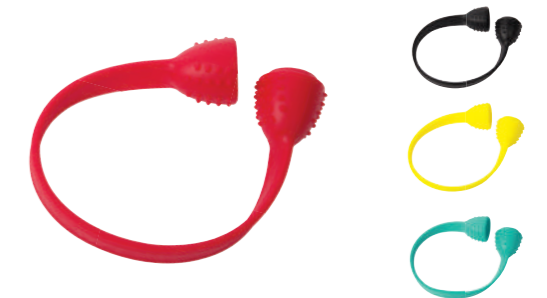
It can also be used to improve posture and technique. Daily practice is recommended : 10 minutes at a time with at least a 2 or 3 minute break. It does not take long to see improvement in shot placement, draw process and balance in the bow shoulder. Try it for yourself!



BALL STRETCH BAND

Used as an exercise tool, WIAWIS BALL Stretch Band will increase archer's strength & flexibility. The archer's posture and technique will be improved with this.

COLORS	Black, Red, Blue, Yellow
--------	--------------------------





PENNY HEALEY

APPARREL

T-SHIRTS



2022 OFFICIAL ARCHER SHIRT

COLOR	PURPLE
SIZE	Small, Medium, Large, XLarge, XXLarge



2022 OFFICIAL ARCHER SHIRT

COLOR	BLUE
SIZE	Small, Medium, Large, XLarge, XXLarge



2016 OFFICIAL ARCHER SHIRT

COLOR	YELLOW
SIZE	Small, Medium, Large, XLarge, XXLarge



2017 OFFICIAL ARCHER SHIRT

COLOR	PINK
SIZE	Small, Medium, Large, XLarge, XXLarge



2015 OFFICIAL ARCHER SHIRT

COLOR	RED&BLUE
SIZE	Small, Medium, Large, XLarge, XXLarge



2016 OFFICIAL ARCHER SHIRT

COLOR	SKY BLUE
SIZE	Small, Medium, Large, XLarge, XXLarge



2017 OFFICIAL ARCHER SHIRT

COLOR	BLACK PINK
SIZE	Small, Medium, Large, XLarge, XXLarge



2018 WIAWIS T-SHIRT

COLOR	BLACK, WHITE
SIZE	Small, Medium, Large, XLarge, XXLarge

CAPS



CAP 2

COLOR	GRAY
-------	------



CAP 3

COLOR	BLACK
-------	-------



CAP 6

COLOR	GRAY
-------	------



CAP 7

SIZE	S(54 cm), L(58 cm)
------	--------------------

COLOR	NAVY
-------	------



CAP 4

COLOR	SAND BEIGE
-------	------------



CAP 5

COLOR	NAVY
-------	------



BEANIE 1

COLOR	BLACK
-------	-------



BEANIE 2

COLOR	NAVY
-------	------



ETC ACCS

UMBRELLA



UMBRELLA

TELESCOPIC UMBRELLA

ARM SLEEVES



BLACK

WHITE

SHOE COVER



RECOMMENDED SHOE SIZE	S 190~210 mm	M 210~245 mm	L 250~280 mm	XL 280~320 mm
-----------------------	-----------------	-----------------	-----------------	------------------

COLOR BLACK



WIAWIS TUMBLER



SIZE : 500ml



WALL CLOCK

SIZE 337x337 mm



WIAWIS CHAIR

SIZE 580x530x340 mm

TECHNOLOGY

WIN&WIN equipment is created by the best and checked by the best.



GRAPHENE NANO CARBON TECHNOLOGY

Graphene is an atomic-scale honeycomb lattice made of carbon atoms. Graphene thickness of 0.2 nanometers is over 200 times stronger than the strongest steel and has improved shock absorption qualities over CNT(Carbon Nano Tube). The material properties and structure provide excellent tensile strength and approximately double the impact strength over present foam materials. The use of this material in Archery products has been solely developed by WIN&WIN.



WIN&WIN CARBON TECHNOLOGY

High-tech engineering creates the best carbon material mixture for WIN&WIN bows, improving product quality and gaining athletes' confidence.



CARBON NANOTUBE TECHNOLOGY

Carbon nanotube and graphite nanofiber are true 21st century materials. They can be made as small as / 10,000th of a human hair, and have superior mechanical, chemical, physical and magnetic properties. Scientists believe nano-materials are the building blocks for the next generation of engineering.



WIN&WIN BOW TECHNOLOGY

Archery specialists and composite material professionals work together at our high-tech facilities to develop each WIN&WIN product. With the right balance of expertise and passion, they deliver the science of archery every single day.



WEIGHT BALANCE SYSTEM

The Weight Balance System is installed in the middle of the riser front end. It moves the center of gravity towards the front side, giving a more comfortable shooting feel and reducing unnecessary movement.



STRAIN BALANCE SYSTEM

A balance system concentrated on the top of the limbs distributes strain energy to the overall limb. It helps to minimize unnecessary limb movement and keeps your shooting smooth and stable.



THE SCIENCE OF SHOOTING FEELING

WIN&WIN products are designed with the archer in mind. Every innovative technology we use is part of the science of shooting feeling.



ABSORB VIBRATION SYSTEM

WIN&WIN's revolutionary new stabilization system specifically addresses the issue of vibration travelling back into the bow. The new ACS-EL stabiliser's unique design absorbs shock, improves dampening and controls torque during shooting.



HIGH TECH FOAM CARBON

Traditional limbs are coated in glass fiber to protect the carbon but it reduces arrow speed because it is so heavy. WIN&WIN uses a 45-degree carbon system that effectively protects the limb, increases shooting stability and reinforces against twisting.



3Ss: SPEED, STABILITY & SMOOTHNESS

Limbs are evaluated by three measurements : arrow speed, stability and smoothness. We research, design and develop all our bows based on these key factors. This makes sure that archers love each and every WIN&WIN product.



TORQUE FREE

Torque as the bow twists in an archer's grip when they release affects arrow flight directly, and will lessen accuracy. Reducing torque within the 0.03 seconds after an arrow is released dramatically improves consistency. WIN&WIN's TFS device absorbs shock and vibration on shooting, minimizes torque and increases accuracy.



CROSS CARBON LIMB TECHNOLOGY

A carbon fabric exclusively produced by WIN&WIN reinforces limbs against twisting and raises their elastic modulus. That means the limbs are stiffer, more stable and produce higher arrow speeds.



THE SCIENCE OF STRING FOLLOW-THROUGH

WIN&WIN engineers know that bow performance is measured on accuracy, stability, arrow speed and how smooth it feels at the moment it is shot. The last is the most important, and the string follow-through or string reaction on release is a major indicator of whether a bow feels good.



TOWER EFFECT

WIN&WIN's barrelled bottom (thicker and wider) design creates an innovative tower effect. This absorbs shock during the shot and increases accuracy by removing unnecessary movement in the bow.



EXTREME DURABILITY

WIN&WIN bows are made to a superior standard. During development each design must survive a 100,000-repetition durability test.



IDEAL GRIP

The WIN&WIN ideal grip is moulded to accept the joint of each finger, making drawing and aiming easier and minimizing torque during shooting.



CENTER SHOT ADJUSTMENT SYSTEM

With WIN&WIN's unique system, limb and riser alignment can be adjusted without unstringing the bow. We also designed a highly-specialized washer that prevents limb bolts from randomly coming loose.



ALUMINIUM FORGING TECHNOLOGY

Our hot forging system enhances the useful properties of all WIN&WIN aluminum products, like tensile strength and hardness.



T6 HEAT TREATMENT

T6 heat treatment raises the tensile strength and elastic modulus of WIN&WIN aluminum risers, making them resilient to intense shock.



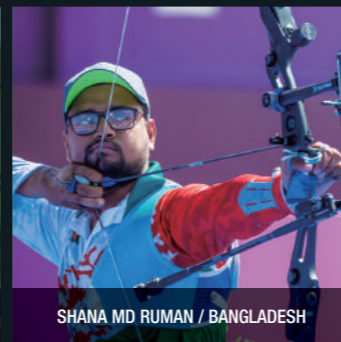
LIM SIHYEON / KOREA



FELIX WIESER / GERMANY



KIM JE DEOK / KOREA



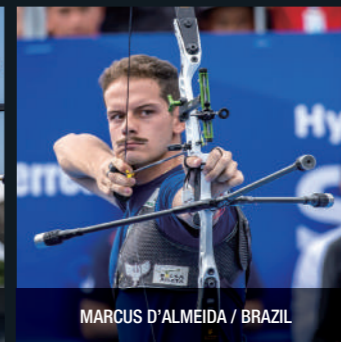
SHANA MD RUMAN / BANGLADESH



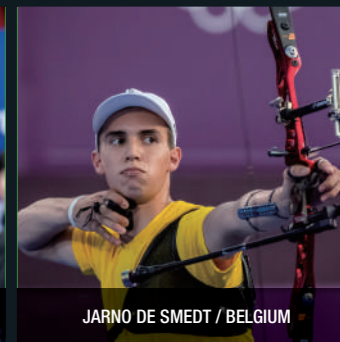
MOLLY NUGENT / USA



TAKAHARU FURUKAWA / JAPAN



MARCUS D'ALMEIDA / BRAZIL



JARNO DE SMEDT / BELGIUM



NODA SATSUKI / JAPAN



ARIF DWI PANGESTU / INDONESIA



PENNY HEALEY / GREAT BRITAIN



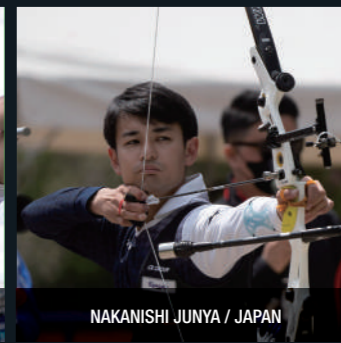
FEDERICO MUSOLESI / ITALY



RYAN TYACK / AUSTRALIA



LISA BARBELIN / FRANCE



NAKANISHI JUNYA / JAPAN



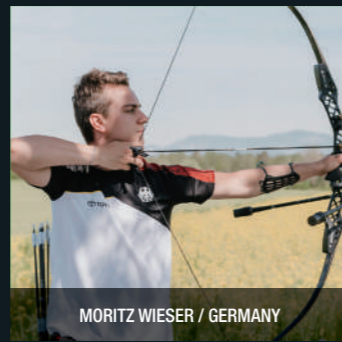
ERIC PETERS / CANADA



LOUISA PIPER / GREAT BRITAIN



SAITO FUMIYA / JAPAN



MORITZ WIESER / GERMANY



WANG DA PENG / CHINA



JEFF HENCKELS / LUXEMBOURG



DAN OLARU / MOLDOVA



JAYANTA TALUKDAR / INDIA



LEI CHIEN-YING / CHINESE TAIPEI



AN QI XUAN / CHINA



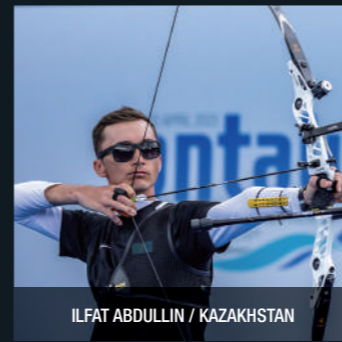
CHOI MISUN / KOREA



PATRICK HUSTON / GREAT BRITAIN



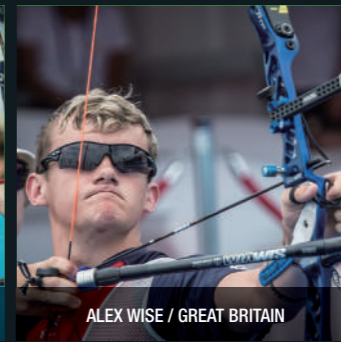
LUCILLA BOARI / ITALY



ILFAT ABDULLIN / KAZAKHSTAN



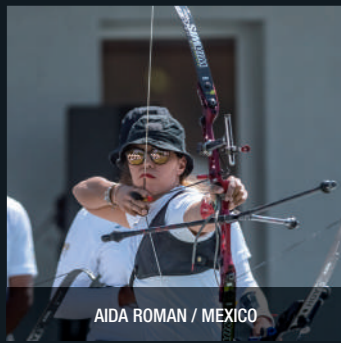
KANG CHAE YOUNG / KOREA



ALEX WISE / GREAT BRITAIN



CHIARA REBAGLIATI / ITALY



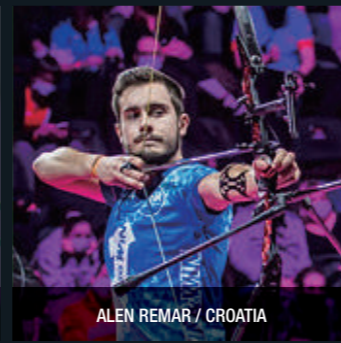
AIDA ROMAN / MEXICO



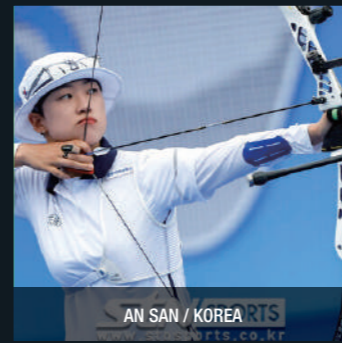
GIJS BROEKSMAN / NETHERLANDS



KHAIRULANUAR MOHAMAD / MALAYSIA



ALEN REMAR / CROATIA



AN SAN / KOREA



ANA MACHADO / BRAZIL



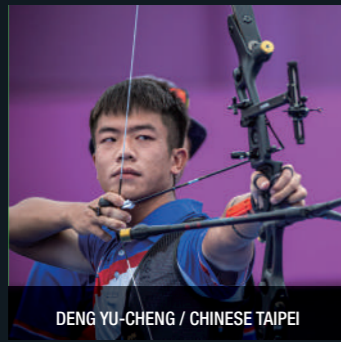
PENG CHIA-MAO / CHINESE TAIPEI



JAMES WOODGATE / GREAT BRITAIN



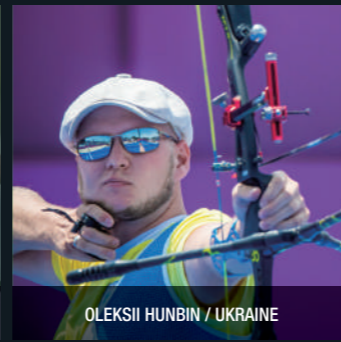
DHIRAJ BOMMADEVARA / INDIA



DENG YU-CHENG / CHINESE TAIPEI



NICOLAS BERNARDI / FRANCE



OLEKSII HUNBIN / UKRAINE



CAROLINE LOPEZ / FRANCE



BHAJAN KAUR / INDIA



CHARLINE SCHWARZ / GERMANY



WEI CHUN HENG / CHINESE TAIPEI

#WIAWIS
#THE WAY TO VICTORY



ACCREDITED
MSCB-113



WIN&WIN KOREA

19, Donghanggongdan-gil, Yangseong-myeon,

Anseong-si, Gyeonggi-do, 17502, KOREA

T +82 31 671 0894 F +82 31 671 0895

E win@wiawis.com

www.wiawis.com | www.win-archery.com

Find us on Facebook : Win&Win Archery · Follow us on Twitter : [wwarchery](https://twitter.com/wwarchery)

Follow us on Pinterest : [wwarchery](https://www.pinterest.com/wwarchery) · Follow us on Instagram : [winarchery](https://www.instagram.com/winarchery)

